

Key Facts

93% of 2006 special education graduates employed or in postsecondary education

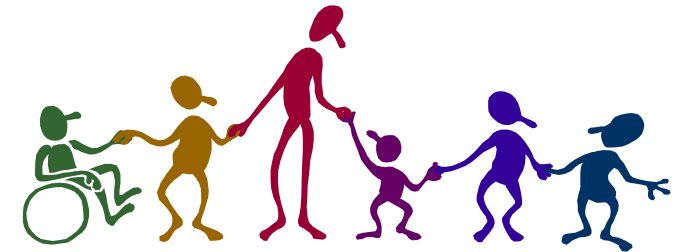
Over 1,000 businesses support students in paid and non-paid employment

Students earned almost \$3,000,000 in 2006-07

Office of Special Education Career and Transition Services

www.fcps.edu/ss/career_transition.htm

CTS 101



Coordinator
Marty Humbertson

Central-based Support

Transition Liaisons: oversee transition-related projects that support students, staff, and families

Administrative Assistant: assist coordinator with all central responsibilities including ordering equipment, materials, and supplies; maintaining staff database; processing time and attendance; tracking travel expenses

School-based Transition Resource Support

Employment and Transition

Representatives (ETR): support SWD and alternative education students at all high schools and Interagency Alternative programs in transition planning, community work experiences, employment opportunities

Job Coach Coordinators: oversee job coach services for SWD at work sites provided by hourly job coaches

AT Support: support teachers and students in transition- and work-related AT needs

Career Assessment: provide continuum of assessment services to SWD and alternative education students – comprehensive assessment in center, Career Snapshot at HS and AHS, Career Scope at HS, alternative programs

Career Academy Support: resource instructional support to SWD at career

School-based Transition Instruction

Work Awareness and Transition (WAT): career exploration and work readiness instruction for SWD

Office Technology and Procedures (OTP): modified business course for HS SWD

Facilities Maintenance Training (GBM): for SWD at Chantilly HS

Computer Tech Prep: modified A+ course for SWD at Chantilly Academy

Davis/Pulley Centers: modified CTE; majority of instruction at business sites

NVCC Annandale Worksite: SWD ages 19-21 receive instruction and work training at NVCC location

Chantilly STEP for 18-22 Year-olds: Instruction and work at business site

Community work experience is part of all instruction for high school students