

Using Data Decision Making for System Change



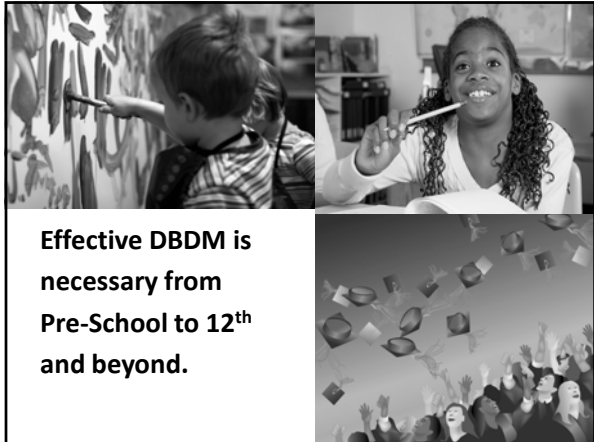
Prepared for the Virginia Council of Administrators of
Special Education
Karen S. Crum, Ed.D.; Assistant Professor
Old Dominion University
kcrum@odu.edu
May 21, 2009

Agenda

- Welcome
- DBDM – Why & What
- DBDM Barriers
- Multiple Measures of Data
- Data Teams
- Problem Finding & Solving

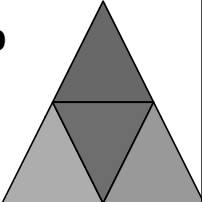
Welcome

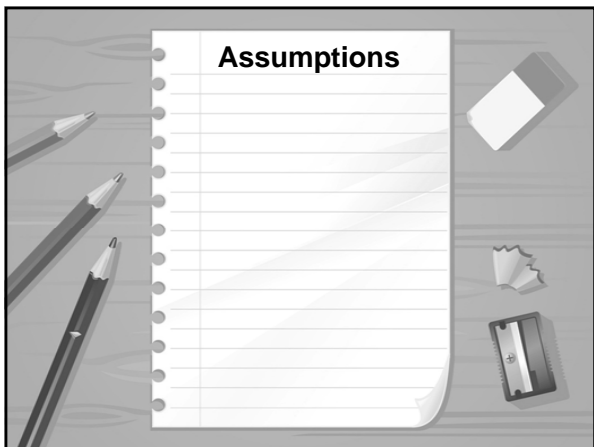




Effective DBDM is necessary from Pre-School to 12th and beyond.


Today we are looking at key foundational components to help develop, support, and strengthen DBDM within your own schools and districts.





Assumptions


Why Data Based Decision Making?



	Made AYP	Did Not Make AYP	TBD	Total
Schools	1,355 (74%)	479 (26%)	3 (<1%)	1,837 (100%)
Divisions	54 (41%)	78 (59%)	0 (0%)	132 (100%)

*As of August 2008; Virginia Department of Education:
<http://www.doe.virginia.gov/VDOE/src/ayp.shtml>

What is Data Based Decision Making?



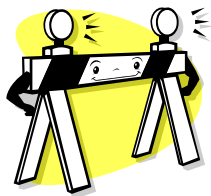
Data can give school personnel the ability to predict potential successes as well as to intercede to prevent failure from occurring and to ensure success.

Bernhardt, 2007

Defining DBDM



Data Based Decision Making (DBDM) is the process of gathering, analyzing, applying, and sharing data in order to promote school improvement.



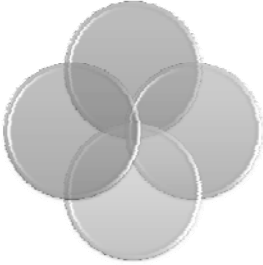


Barriers to DBDM and Overcoming Them


Models
Lack of background knowledge
Fear of data
Cumbersome data storage systems
Just another thing "to do"
Which data do we focus on?
Other barriers...




The Multiple Measures of Data



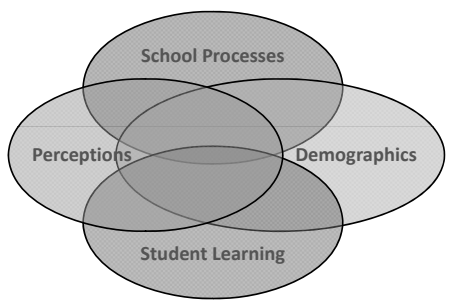
What types of data are being used in your school and district to make decisions?





Categorize Data


Multiple Measures of Data




School Processes
Perceptions
Demographics
Student Learning

Demographics

- Community
- School District
- School
- Students Over Time, by grade level
- Staff Over Time
- Parents
- Other?




- Surveys
- Interviews
- Students
- Staff
- Stakeholders



Perceptions



Student Learning



- standardized tests
- norm/criterion-referenced tests
- formative assessments

School Processes




School Processes

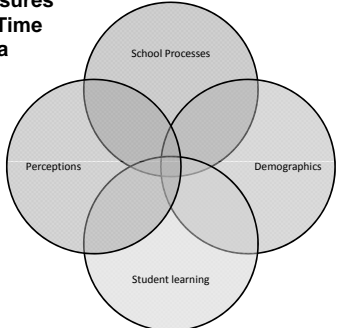
Instructional Strategies (Marzano's, etc...)

Schedule (Block, RTI, Encore,...)

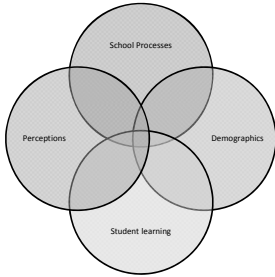
Programs (Electives, Special Education, ...)



- **Baseline Measures**
- **Benchmark Measures**
- **Measures Over Time**
- **Intersecting Data**

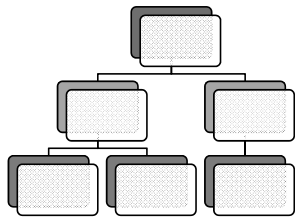


Multiple Measures of Data



Closely examining this data and the intersection of this data allows you, your team, and your staff to predict what actions/processes/programs meet the learning needs of your students.

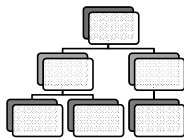
DBDM Framework



Why map out a process?

Preuss' DBDM Model

- 10 steps
- Generic Model
- Adapt to meet your own school/division needs



1. What is the issue at hand?	This can be a key indicator of student success; it can be something identified as a problem, something to be fixed, or improved
2. What is the ideal condition?	What is the measurement used and what is considered to be the ideal level?


3. What is the present condition?	Use same metrics as in #2
4. What is the gap?	Conduct gap analysis
5. Is this a priority issue?	Use prioritizing process; ultimately a value judgment
6. Develop an “ends focused” statement.	Goal statement should explain: what’s going to take place over what period of time using data from #'s 2-4

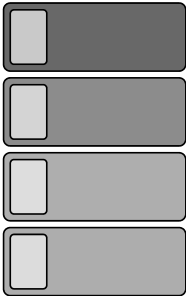
7. Search for root cause	Data is transformed into understanding and wisdom; data is analyzed and triangulated
8. Select strategies for improvement	Aimed at causes and not symptoms; designed to dissolve causes and not mask them

9. Action Plan	Develop an action plan to implement the strategies. Assign responsibilities, resources, and timeline.
10. Monitor and Evaluate	Monitoring = are we doing what we said we would (action plan). If not, why not? Evaluation = is it making a difference?

SMART Goals

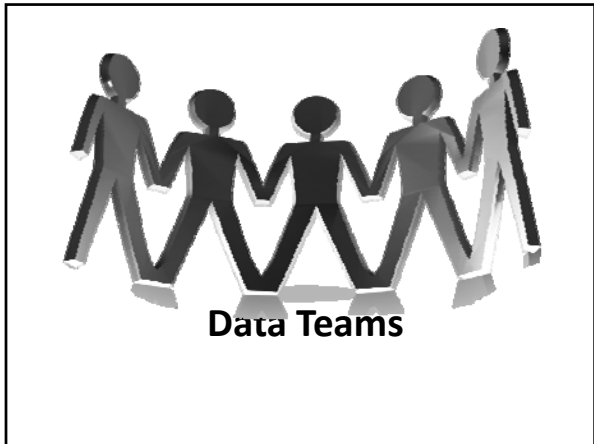
- Specific
- Measurable
- Achievable
- Relevant
- Timely





This process can be used at the district, school, and team/content level

Teachers can also use this within their own classes

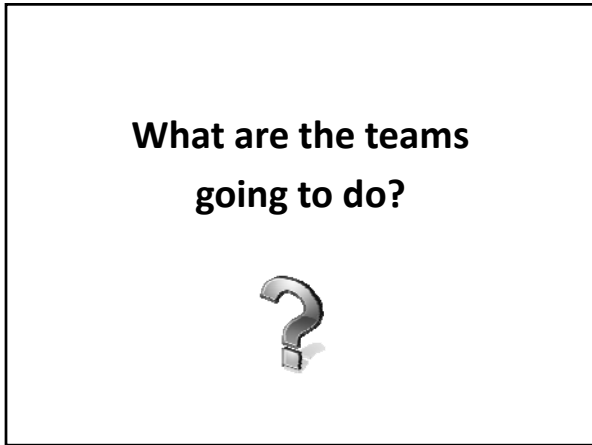








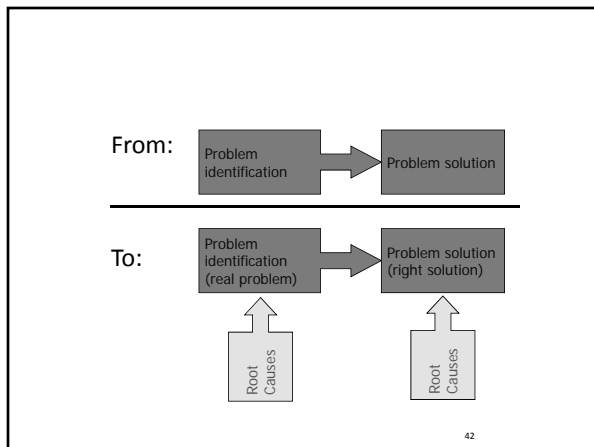
Share the Pie – Everyone Will Benefit











Key Indicator of Student Success

